



TWINTECGROUP.COM

# Total Concrete Flooring Solutions

Engineered for Performance.





## The Twintec Story

# What We Build Beneath Your Feet, **We Build for the World above.**

Founded in 1996 by Bruno Lazzari, Twintec was created to transform industrial concrete flooring through engineering precision, operational excellence and performance-led thinking.

From pioneering jointless slab technology in Europe to becoming a global benchmark for sustainable industrial concrete flooring solutions, Twintec has grown through innovation, international expansion and technical leadership.

## Engineering Concrete Floors that Perform. **Partnerships that Last.**



**30+**  
Years Experience



**25+**  
Countries Served



**8,000+**  
Projects Delivered



**100M+**  
m<sup>2</sup> Constructed



## Our Mission

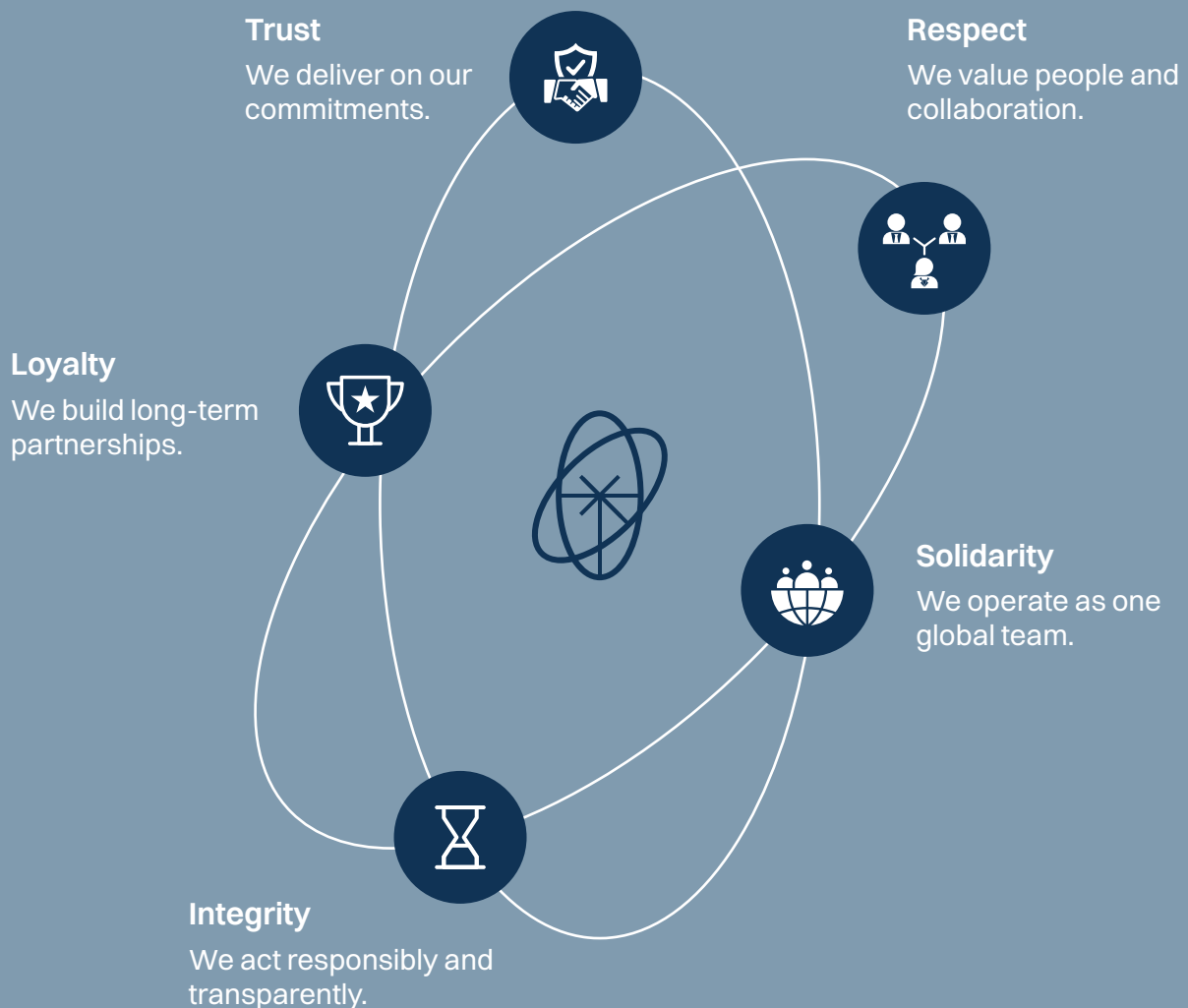
To deliver engineered, high-performance, sustainable concrete flooring solutions that optimise operational efficiency and extend lifecycle performance across industrial environments worldwide.



## Our Vision

To be the global leader in industrial concrete flooring services and solutions, setting the benchmark for design excellence, performance and sustainability.

## Our Core Values



# Our Integrated Solutions

Each service can be delivered independently or integrated into a fully engineered solution depending on the specific needs of your project.

- Engineering Expertise
- Design. Build. Guarantee.
- Fibre & Joint Solutions
- Assessment, Repairs & Performance Upgrades
- Equipment & Construction Technology



Together, they provide complete lifecycle accountability.

## Engineering Expertise

### Optimise Your Concrete Flooring with Expert Value Engineering.

From redesigns to specialist engineering solutions, we help clients reduce cost, improve performance and get projects right the first time.

#### Our in-house structural engineers analyse:

- Soil-structure interaction
- Slab thickness optimisation
- Reinforcement strategies
- Joint performance
- Load paths
- Crack control and curling mitigation
- Carbon impact modelling

Every slab is individually **engineered to meet operational and commercial objectives**. We do not over-engineer with unnecessary mass. **We engineer precision.**

# Design. Build. Guarantee.

Twintec's Total Offer Concept integrates design responsibility, construction accountability and long-term assurance.



## We Design It.

Value engineered design solutions adapted to each user's specific needs.

Twintec slabs are all designed in-house by the specialist engineering team.

Incorporating the latest innovations in concrete floor slab design and backed by Product Liability and Professional Indemnity Insurance.



## We Build It.

Twintec resources coupled with local expertise.

Innovative products, production methods, materials and specialist equipment.

Specialist teams with the expertise and capability to execute complex projects worldwide.



## We Stand Behind It.

### Twintec assurance guarantee.

Twintec's guarantee extends across the business incorporating quality control, professional staff, customer service and aftercare in addition to insurances and warranties.

Unlike fragmented project structures, Twintec provides:

- In-house structural design
- Reinforcement optimisation
- Concrete mix collaboration
- Specialist installation
- Quality assurance testing
- Aftercare support

One specialist.  
**One responsibility.**



# Flooring Solutions Portfolio

## Seamless Solutions

No opening joints

No saw cuts

Maximum durability

Reduced maintenance

Operational flexibility

Suitable for ground bearing or suspended slabs

Lower lifecycle cost

Twintec seamless floors eliminate opening joints across the slab area, maximising durability, providing total future flexibility and long-term operational performance.

**Two seamless design approaches** are available:

### Twintec® ULTIMATE

Steel fibre and mesh reinforced seamless system.

### Twintec® Seamless

Mesh reinforced seamless system without steel fibres.

**Both solutions deliver identical operational and lifecycle advantages**, with reinforcement design selected to suit specific project requirements.

## Jointless Solutions

**Large panel construction. Minimal joints.**

Twintec jointless systems eliminate traditional saw-cut contraction joints through steel fibre reinforcement and engineered large panel construction, significantly reducing maintenance and improving operational efficiency.

**Two jointless design approaches** are available:

### Twintec® Freeplan® variants

Jointless large-bay concrete flooring system designed to minimise joints and maximise durability. Ground bearing, suspended/pile supported and external applications.

### Twintec® Twinplan®

Combined steel fibre and traditional reinforcement system designed for heavy-duty industrial flooring applications. Designed for VNA operational demands, high flatness and level tolerances (TR34, DIN, ACI F min compliant).

## Structural Solutions

**Steel fibre reinforced structural slabs and foundations designed as load-bearing elements.**

Reduced slab depth

Reduced steel usage

Faster programme delivery

Lower embodied carbon

Applications include **cladrack, multi-storey, silos, tanks and heavy infrastructure**.

Twintec® STRUCTURAL systems are engineered as load-bearing structural elements, replacing traditional reinforced concrete in appropriate applications. Designed using detailed engineering analysis and subsoil interaction modelling to optimise slab thickness, steel usage and programme efficiency.

# Sustainability by Design

Concrete has a footprint. **We engineer it smaller.**

Concrete is one of the most widely used materials on earth and one of the most carbon intensive.

At Twintec, sustainability is not an add-on. It is engineered into every slab through smarter design, material efficiency and long-term performance thinking.

Measured outcomes:

~30%

Average embodied carbon reduction

UP TO

66%

Reduction is achievable

~7%

Less concrete volume

~71%

Less steel reinforcement



Faster construction programmes



Through slab optimisation and reinforcement efficiency, Twintec reduces material consumption while maintaining structural integrity.

## Optimised Slab Design

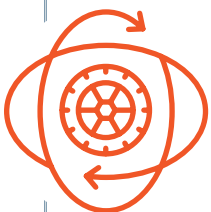
We engineer each slab to exact load requirements — reducing unnecessary thickness, material use and carbon impact.

## Reduced Steel Consumption

Advanced fibre reinforcement significantly reduces reliance on traditional steel, lowering embodied carbon and improving constructability.

## Durability is Sustainability

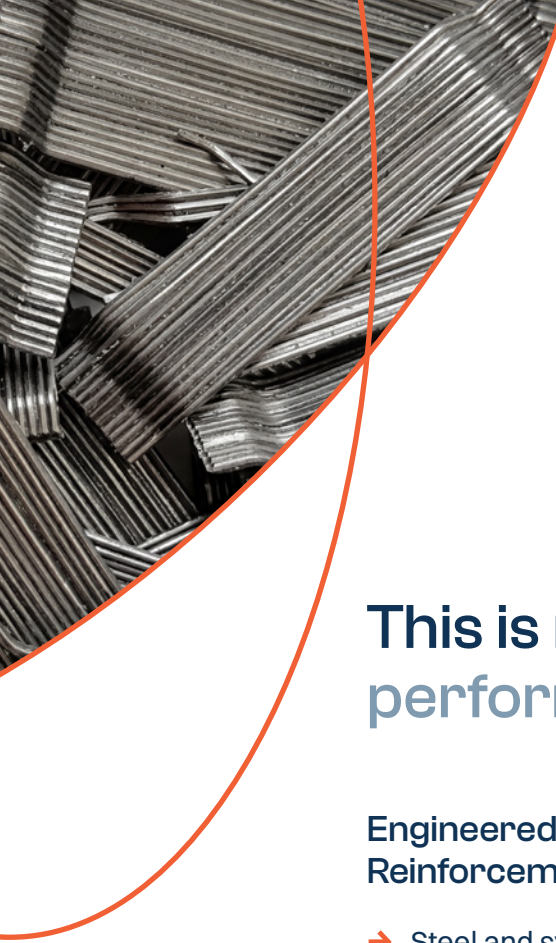
Longer-lasting floors reduce maintenance, repairs and future material demand — cutting lifecycle carbon.



## Circularity in Action

We incorporate **repurposed tyre-derived steel** into our **fibre systems** — transforming waste into high-performance reinforcement without compromising strength or durability.

Sustainability isn't a statement. **It's engineered performance, measured outcomes and real-world delivery.**



# Fibre & Joint Solutions

Engineered Reinforcement Solutions  
Supplied Globally.

Twintec supplies high-performance steel fibres, synthetic macro fibres and engineered armoured joint systems as part of a fully integrated flooring solution.

## This is reinforcement engineered for performance, not commodity supply.

### Engineered Fibre Reinforcement

- Steel and synthetic macro fibres
- Optimised for crack control and load distribution
- Reduced reliance on traditional mesh and rebar
- Improved speed and efficiency of construction

### Armoured Joint Systems

- Engineered load transfer solutions
- Protection against joint failure and arris damage
- Designed for high-traffic industrial environments
- Long-term durability and reduced maintenance

### Supporting:



Industrial flooring



Civil works



Precast



Infrastructure

Backed by performance across **100M+ m<sup>2</sup> of constructed slabs**, our systems are developed from real-world engineering experience — not theory.

Integrated with Twintec design and construction expertise, our fibre and joint systems deliver stronger, more efficient and longer-lasting concrete floors.

# Assessment, Repairs & Performance Upgrades

Protecting performance. Extending service life.

Industrial floors are critical infrastructure. When performance declines, the impact is operational, financial and immediate.

Twintec delivers engineered solutions that restore performance and prepare floors for future demand.



## Assessment

We identify root causes  
— not just visible defects:

- Structural cracking and joint deterioration
- Slab movement and curling
- Surface wear and delamination
- Load capacity misalignment



## Repair

Targeted, durable repair solutions:

- Crack stitching and structural repair
- Joint reconstruction and load transfer restoration
- Surface levelling and micro-grinding
- Localised slab replacement



## Performance Upgrades

When operational demands change, we upgrade performance:

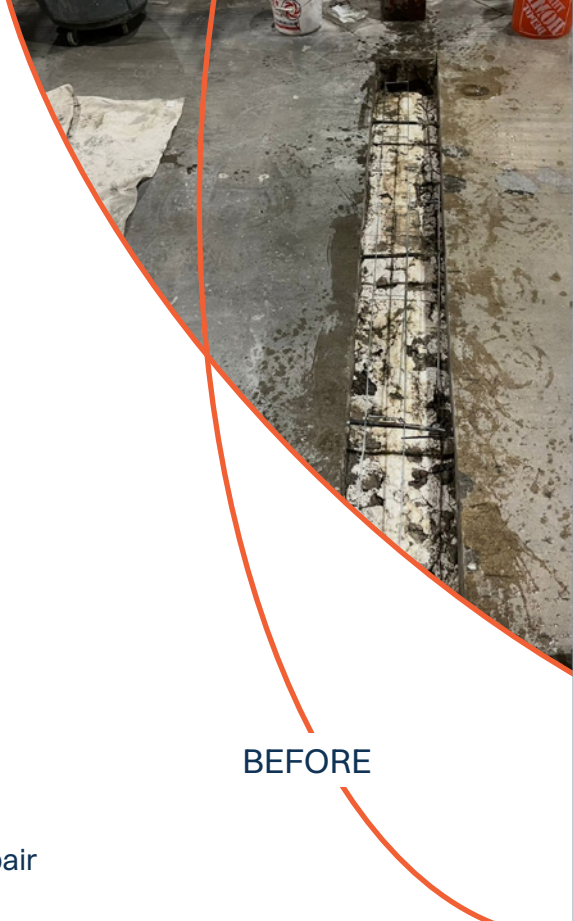
- Structural strengthening and overlays
- Joint and impact zone reinforcement
- Flatness and tolerance correction
- Wear resistance and surface protection

Repairs correct defects. Upgrades prepare the slab for future operational demand. **Lifecycle engineering.**  
**Not patchwork maintenance.**

Every intervention is engineered to extend service life, reduce downtime and protect long-term operational performance.

BEFORE

AFTER





# Equipment and Construction Technology

Precision equipment. Predictable performance.

Through our equipment division, Twintec develops and supplies advanced concrete placement and finishing technology used globally to deliver high-performance industrial floors.

## Laser Screeding Technology

- High flatness and level tolerances
- Consistent surface quality

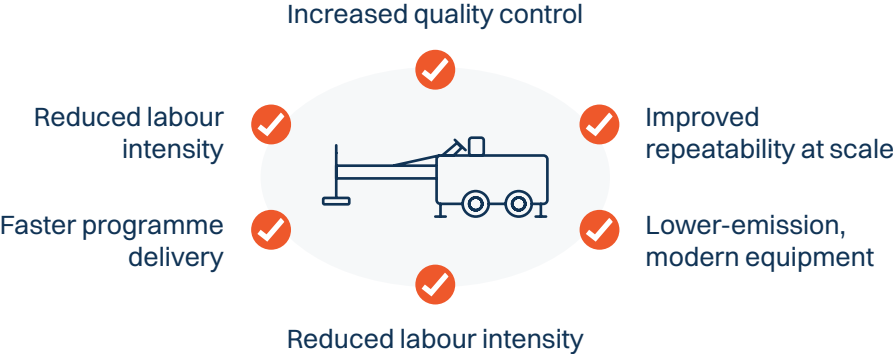
## Advanced Placement Systems

- Efficient concrete distribution
- Improved fibre integration

## High-Performance Finishing Equipment

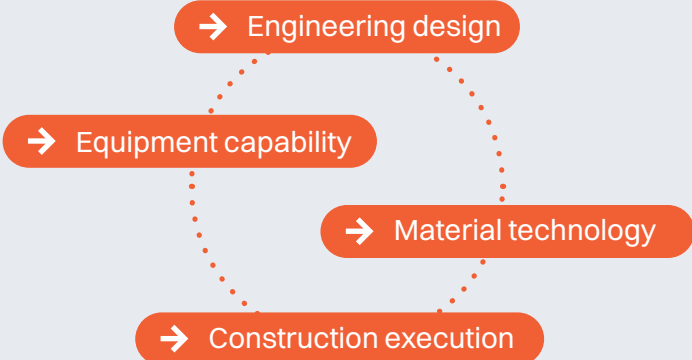
- Precision surface finishing
- Reduced variability across large areas

Twintec supplies specialist laser screeding and finishing technology to deliver:



Technology strengthens **predictability and quality at scale.**

Unlike standalone equipment suppliers, Twintec integrates:



One system. **One responsibility. One outcome.**

# The Twintec Difference



## 30 Years of **Expertise**

Delivering trusted flooring solutions worldwide.



## **Global Expertise,** Locally Applied

Bringing international knowledge to your project.



## **Sustainable** Solutions

Reducing environmental impact while supporting your ESG goals.



## **Proven High-** **Performance**

Materials engineered for durability and efficiency.



## **Scalable & Flexible** Solutions

Tailored for contractors and end-users.

**We reduce fragmentation.**  
**We reduce risk.**  
**We protect performance.**

Across every project, Twintec operates to strict standards of safety, compliance, ethical business practice and environmental responsibility, ensuring performance is delivered with integrity.





Scan to  
Learn More.



Talk To Experts, Talk to Twintec.

Follow us:

 /twintec-global

Subscribe:

 TWINTEC - Global Performance

Email us:

sales@twintecgroup.com